



Wood-Lok™ HPM

High Performance Matrix

PRODUCT OVERVIEW:



Wood-Lok HPM consists of specially processed long strand virgin wood fibers along with a proprietary blend of high-strength, non-toxic, cross-linked organic binders.

This combination gives superior erosion protection without the addition of man-made, non-biodegradable synthetic fibers.

Wood-Lok HPM is applied like mulch and forms a blanket that adheres to the soil surface immediately upon application. After it cures the blanket helps retain soil moisture, is porous, erosion resistant and protects the soil surface from water and wind erosion.

The mulch blanket retains its integrity and protects the soil despite repeated rains for well beyond twelve months. The extra-long wood fibers form tent-like pockets, which aid in seed germination and plant growth.

When applied over the soil surface the wood fibers twist and interlock with each other and the soil as they dry. Along with the high-strength binder the holding power of the wood fibers to the soil is much stronger than BFM, thus providing superior erosion protection.

Wood-Lok HPM is packaged in easy to handle plastic bags and will load quickly into all mechanical paddle agitated hydraulic seeding equipment. When mixed with water Wood-Lok HPM will form a homogeneous slurry and can be used with seed and fertilizer. Wood-Lok HPM will remain in suspension during agitation and pumping and the slurry does not dewater during the application process. The green color allows for an even application of material over the soil surface.



FEATURES & ADVANTAGES:

- Extra-long wood fibers make a stronger mat, thus increasing erosion protection
- Greater than 99% effectiveness in controlling soil loss
- No man-made synthetic fiber
- Wood fiber is 100% biodegradable
- Plant growth increase greater than 400% versus bare soil
- Mat blanket retains integrity after repeated rains
- Conforms to all surface contours
- Helps prevent soil rills
- Disperses quickly in water forming a homogeneous slurry
- High temperature steam fiberization sterilizes the wood fibers
- Made from specially selected clean pine and poplar wood chips
- Fiber stays in uniform suspension and blends easily with seed and fertilizer
- Provides favorable micro-climate for seed germination
- Has no germination or growth inhibiting factors
- Wood fibers decompose after plants have established
- Safe to use around humans, pets, fish and wildlife

APPLEGATE MULCH
1000 HIGHVIEW DRIVE
WEBBERVILLE MI 48892
HEADQUARTERS: 517-521-3545
FAX: 517-521-3597
800-627-7536 TOLL FREE
AskUs@ApplegateMulch.com

Worldwide Supplier

RECOMMENDED APPLICATION AND LOADING RATES:

APPLICATION RATE

- 3,000 to 3,500 pounds per acre – 2H: 1V slopes
- 3,500 to 4,000 pounds per acre – slopes steeper than 2H: 1V depending on site conditions
- Apply the Wood-Lok HPM to make a uniform mat. Apply from two directions to avoid light coverage or shadowing on the backside of ridges and depressions. Application should be made sufficiently in advance of rainfall to allow a short drying time

TANK LOADING RATE

- Begin loading mulch when the water level is above the agitator paddles
- 50 pounds per 125 gallons of water
- Agitate Wood-Lok HPM for a minimum of 10 minutes

SPECIFICATIONS:

- Wood-Lok HPM is manufactured to specific fiber sizes in a controlled environment to provide best job-site performance. Specially selected wood chips are softened by high temperature steam and the mechanical refining process produces extra-long soft fibers. The fibers have physical features that tend to interlock with each other, thus forming a more protective blanket.
- Refined wood fiber (total weight basis): 90%
- Proprietary cross-linked binder (total weight basis): 10%
- Moisture content (total weight basis) ASTM D-644: 12.0% ±3.0%
- Organic Matter (oven dry weight basis) ASTM D-586: 97.0%
- Ash content (oven dried basis) ASTM D-586: 3.0%
- pH @ 3% concentration in water SW846 9045: 4.8 ±0.5
- Water holding capacity (minimum) ASTM D7367: min 1,300 grams
- Color: Green
- Material Safety Data Class: Naturally occurring material
- Wood-Lok HPM is sealed in heavy-duty plastic bags with a UV inhibitor
- Each easy to open bag weighs 50 pounds (22.7 kg) net and measures 10" x 19" x 29"

Manufacturer of the finest hydroseeding products.

Applegate's most appreciated benefit:

We listen, teach, serve and stand behind you 100%.

Let us prove it. Call us with any concern.

800.627.7536

We've always been **green.**
Sustainable & earth-friendly since 1980



• PLANTS IN: MICHIGAN ~ WISCONSIN ~ KENTUCKY ~ COLORADO ~ GEORGIA ~ PENNSYLVANIA ~ LOUISIANA - ARIZONA - ONTARIO

Then God said, "Let the land burst forth with every sort of grass"...and so it was...and God saw that it was good. - Genesis 1:11-12



Wood-Lok™ BFM

Bonded Fiber Matrix



PRODUCT OVERVIEW:

Wood-Lok BFM is the superior bonded fiber matrix used for soil erosion control. It controls erosion more effectively than rolled erosion control blankets, sod and other competitive brands of BFM. The combination of our steam fiberized, long strand virgin wood fibers and the extra holding power of our proprietary, multi-purpose, high strength cross-linked hydrocolloid-based tackifier anchors the mulch mat to the soil and it maintains its integrity despite repeated rains. The porous mulch mat forms a water absorbing, anti-transpirant, breathable matrix designed to provide the perfect environment for seed germination.

Wood-Lok BFM can be used with any mechanical agitated hydraulic seeding equipment. It sprays on like a hydro-mulch to form a blanket that adheres to the soil. As the matrix cures the wood fibers twist and lock with each other and with the soil to form a porous, erosion resistant mat that binds and protects the soil surface from water and wind erosion.

Wood-Lok BFM is manufactured to specific fiber sizes in a heat controlled environment to provide best job site performance. Fibrils and fiber bundles have physical features that tend to intertwine with each other forming a more protective blanket.

Applegate Mulch's proprietary hydro-colloid binders and the holding power of the long strand fibers make Wood-Lok BFM the preferred hydraulic erosion control product on the market today. When combined with our excellent service you can never go wrong.



FEATURES & ADVANTAGES:

- Forms a stable erosion control mat for up to one year on 1H:1V slopes or less
- Incredible fiber to fiber and fiber to soil bonding
- Performs better than Rolled Erosion Control Blankets
 - Can be applied over rough soil – RECB's require smooth surface
 - Intimate soil contact on any terrain – not the case with RECB's
 - Biodegrades – RECB's must be manually removed
 - Environmentally friendly, not a hazard to wildlife as is RECB's
 - Less labor intensive and less costly than RECB's
- Erosion control mat does not dissolve or re-wet after it cures
- Porous anti-transpirant mat encourages seed germination
- Vibrant green color allows for an efficient and even application from a hose or tower gun
- Loads quickly and easily into all mechanical paddle agitated hydraulic seeding equipment
- Safe to use around humans, pets, wildlife and fish
- Made from selected, fresh cut Pine and Poplar whole wood chips (virgin wood)
- Our patented manufacturing process includes extreme heat, steam, pressure and mechanical defibration producing the finest sterile, toxin free mulch for seeding and erosion control
- No growth inhibiting factors
- Biodegradeable
- Packaged in 50 lb. heavy plastic bags with UV inhibitor
- Additives are homogeneously mixed with the wood fiber during manufacturing
- Proprietary binders will not gum ball in hard or extremely cold water

APPLEGATE MULCH
1000 HIGHVIEW DRIVE
WEBBERVILLE MI 48892
HEADQUARTERS: 517-521-3545
FAX: 517-521-3597
800-627-7536 TOLL FREE
AskUs@ApplegateMulch.com

Worldwide Supplier

RECOMMENDED APPLICATION AND LOADING RATES:

- 2,500 pounds per acre on flat to 3H:1V slopes
- 3,000 pounds per acre on 2H:1V slopes
- 3,500 pounds per acre on 1H:1V slopes or greater
- Apply Wood-Lok BFM in 2 opposing directions for complete coverage

TANK LOADING:

- 50 lbs per 125 gallons of water

SPECIFICATIONS:

- Wood-Lok BFM is manufactured to specific fiber sizes in a heat controlled environment to provide best job site performance. Fibrils and fiber bundles have physical features that tend to intertwine with each other forming a more protective blanket.
- Moisture content: 12.0%±3.0%
- Organic matter (oven dried basis): 99.3%±0.2%
- Ash content (oven dried basis): 0.7%±0.2%
- pH @ 3% concentration: 4.8±0.5
- Water holding capacity (per 100 grams oven dry fiber: min 1,250 gms.
- Color: Green
- Tackifier content (based on total weight): 10.0%
- Material Safety Data Class: Naturally occurring material
- Wood-Lok BFM is sealed in heavy-duty plastic bags with a UV inhibitor.
- Each easy to open bag weighs 50 lbs. (22.7 kg) net and measures 9" x 19" x 27"
- There are 40 bags per pallet making a tight, stretch-wrapped unit.

Manufacturer of the finest hydroseeding products.
Applegate's most appreciated benefit:

We listen, teach, serve, and stand behind you 100%.

Let us prove it. Call us with any concern.

1.800.627.7536

We've always been green.
Sustainable & earth-friendly since 1980





Wood-Lok™ SMM

Stabilized Mulch Matrix



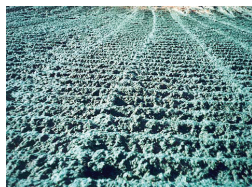
PRODUCT OVERVIEW:

Wood-Lok SMM is a stabilized mulch matrix system specifically designed for temporary soil stabilization and erosion control on construction areas where the soil has been disturbed. It is very cost effective for up to 6 months of protection on flat to medium slopes. This easy to use mulch matrix easily mixes in a slurry and can be applied to the soil with standard hydraulic planting equipment.

Wood-Lok SMM consists of a proprietary cross-linked tackifier that is blended with long strand virgin wood fibers. The mulch matrix is mixed like a hydromulch and when sprayed it forms a mat that conforms and adheres to the soil. The porous, anti-transpirant erosion resistant matrix mat protects the soil surface and holds soil

particles in place immediately after application. The mat strength improves with curing time and retains its tensile strength and soil protection even through repeated rains.

On the ground the wood fibers twist and lock with the soil as they cure. The proprietary cross-linked tackifier and wood fibers form a strong soil bond that provides increased erosion protection.



FEATURES & ADVANTAGES:

- Ideal for building pads and slopes where temporary erosion protection is required
- Lower cost as compared to rolled erosion control blankets or sod
- Strong soil-bonding fibers for increased soil stabilization
- Mat retains integrity after repeated rains
- High temperature steam processing sterilizes the fiber
- Proprietary tackifier is mixed with the long strand wood fiber during the manufacturing process to insure performance and compliance
- Made from selected, fresh cut, clean, whole pine and poplar chips
- Mixes quickly in hydroseeding equipment
- All ingredients stay in uniform suspension during the application process
- On the ground SMM provides a favorable environment for seed germination
- Green color assists the applicator in applying an even application
- No germination or growth inhibiting factors
- 100% biodegradable and environmentally safe to humans, pets, wildlife and fish

APPLEGATE MULCH
1000 HIGHVIEW DRIVE
WEBBERVILLE MI 48892
HEADQUARTERS: 517-521-3545
FAX: 517-521-3597
800-627-7536 TOLL FREE
AskUs@ApplegateMulch.com

Worldwide Supplier

RECOMMENDED APPLICATION AND LOADING RATES:

RECOMMENDED APPLICATION RATES

- 2,500 lbs/acre -- flat to 3H: 1V slopes.
- 3,000 lbs/acre --2.5H: 1V slopes
- Apply the stabilized mulch matrix from two opposing directions to make a uniform mat over the soil surface

TANK LOADING

- 50 lbs per 125 gallon of water

SPECIFICATIONS:

- Applegate Wood-Lok SMM is manufactured to specific fiber sizes in a high temperature environment to provide superior job-site performance.
- Fibrils and fiber bundles are refined to intertwine with each other, increasing the strength of the mat when sprayed on the soil.
- A cross-linked, non-toxic tackifier is uniformly blended with the fiber during manufacture to make a strong, erosion-resistant mat after spraying and drying.
- Composition: Refined virgin wood fiber: (total weight basis) 95%
- Tackifier: (total weight basis) 5%
- Moisture content (total weight basis): 12% ± 3%
- Water holding capacity (per 100 grams oven dry fiber): min 1,250 gms.
- Color: Green
- Material Safety Data Class: Naturally occurring material
- Wood-Lok SMM is sealed in heavy duty plastic bags with a UV inhibitor.
- Each bag weighs 50 lbs. (22.7 kg) net and measures 9 x 19 x 27 inches.
- There are 40 bags per pallet, which are tightly stretch-wrapped into a unit.

Manufacturer of the finest hydroseeding products.
Applegate's most appreciated benefit:

We listen, teach, serve, and stand behind you 100%.

Let us prove it. Call us with any concern.

1.800.627.7536

We've always been green.
Sustainable & earth-friendly since 1980



PLANTS IN: MICHIGAN ~ WISCONSIN ~ KENTUCKY ~ COLORADO ~ GEORGIA ~ PENNSYLVANIA ~ LOUISIANA - ARIZONA - ONTARIO

Then God said, "Let the land burst forth with every sort of grass"...and so it was...and God saw that it was good. - Genesis 1:11-12



Wood-Lok™ 300

Virgin Wood Fiber with Organic Tackifier



PRODUCT OVERVIEW:

Wood-Lok 300 is a natural virgin wood fiber mulch with organic tackifier for use in hydraulic planting. It is a high quality 100% virgin wood fiber hydroseeding mulch manufactured under constant production control checks. It is manufactured in size and texture for optimum performance through a fiberization process that involves high temperature, steam, dying, drying and packaging.

Wood-Lok 300 is manufactured from fresh cut, selected, clean pine and poplar wood chips and meets or exceeds specifications and standards typical for virgin wood fiber hydromulch with organic tackifier.

When applied Wood-Lok 300 fibers twist and lock with each other as they cure and with the added organic tackifier a protective mulch mat is formed that aids in erosion control, holding the seed in place and providing an excellent environment for seed germination.

Wood-Lok 300 is designed to load quickly in all mechanical agitated hydroseeding equipment. The fibers are sized for maximum loading in the tank and will produce a homogeneous slurry with water, seed and fertilizer.

Wood-Lok 300 will rapidly go into slurry suspension during the mixing process and will remain in suspension during the application process.

Wood-Lok 300 is green in color allowing for visible application assistance at maximum pumping distances. This allows the applicator to apply an even application of material.



FEATURES & ADVANTAGES:

- Forms a stable mulch mat holding seeds in place for up to 6 months on 4H:1V slopes or less
- Enhances soil erosion control
- Does not gum ball in hard or extremely cold water
- Porous anti-transpirant mat encourages seed germination
- Vibrant green color allows for an efficient and even application
- Loads quickly and easily into any mechanical paddle agitated hydroseeding machine
- Environmentally friendly – biodegrades and safe to use around humans, pets, fish and wildlife
- Made from selected, fresh cut pine and poplar whole wood chips (virgin wood)
- Our patented manufacturing process includes extreme heat, steam, pressure and mechanical defibration producing the finest sterile, toxin free mulch for seeding and erosion control
- No growth inhibiting factors
- Biodegradeable
- Packaged in 50 lb. heavy plastic bags with UV inhibitor
- Additives are homogeneously mixed with the wood fiber during manufacturing
- Added organic tackifier will not gum ball in hard or extremely cold water
- Safe for use around humans, pets, wildlife and fish

APPLEGATE MULCH
1000 HIGHVIEW DRIVE
WEBBERVILLE MI 48892
HEADQUARTERS: 517-521-3545
FAX: 517-521-3597
800-627-7536 TOLL FREE
AskUs@ApplegateMulch.com

Worldwide Supplier

RECOMMENDED APPLICATION AND LOADING RATES:

APPLICATION

- Recommended minimum application: 1,500 pounds per acre on flat to 5H:1V slopes

TANK LOADING RATES:

- 50 lbs per 100 gallon of water / tower gun application
- 45 lbs per 100 gallon of water / hose application

SPECIFICATIONS:

- Wood-Lok 300 is a wood hydromulch manufactured to specific fiber sizes in a heat controlled environment to provide the best job site performance. Fibrils and fiber bundles have physical features that intertwine with each other and with the added tackifier form a protective mulch mat.
- Moisture content: 12.0%±3.0%
- Organic matter (oven dried basis): 99.3%±0.2%
- Ash content (oven dried basis): 0.7%±0.2%
- Average pH @ 3% concentration: 4.8±0.5
- Water holding capacity (per 100 grams oven dry fiber): min 1,250 gms.
- Color: Green
- Tackifier content (based on total weight): 3.0%
- Material Safety Data Class: Naturally occurring material
- Wood-Lok 300 is sealed in heavy duty plastic bags with a UV inhibitor. Each easy to open bag weighs 50 lbs. (22.7 kg) net and measures 9 x 19 x 27 inches. There are 40 bags/pallet which makes into a tight, stretch-wrapped unit.

Manufacturer of the finest hydroseeding products.
Applegate's most appreciated benefit:

We listen, teach, serve, and stand behind you 100%.

Let us prove it. Call us with any concern.

1.800.627.7536

We've always been green.
Sustainable & earth-friendly since 1980



PLANTS IN: MICHIGAN ~ WISCONSIN ~ KENTUCKY ~ COLORADO ~ GEORGIA ~ PENNSYLVANIA ~ LOUISIANA ~ ARIZONA ~ ONTARIO

Then God said, "Let the land burst forth with every sort of grass"...and so it was...and God saw that it was good. - Genesis 1:11-12



Wood-Lok™ 100

Virgin Wood Fiber



PRODUCT OVERVIEW:

Wood-Lok 100 is packaged in 50 lb bags and is a natural virgin wood fiber mulch for use in hydraulic planting. It is a high quality 100% wood fiber hydroseeding mulch manufactured under constant production control checks. It is manufactured in size and texture for optimum performance through a fiberization process that involves high temperature, steam, dying, drying and packaging.

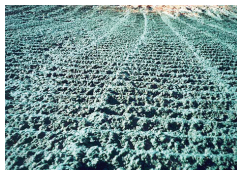
Wood-Lok 100 Hydromulch is manufactured from virgin, fresh cut, selected, clean pine and poplar wood chips and meets or exceeds specifications and standards typical for Wood Fiber Hydromulch.

When applied Wood-Lok 100 fibers twist and lock with each other as they cure. This forms a protective mulch mat that aids in erosion control, holding the seeds in place, and providing an excellent environment for seed germination.

Wood-Lok 100 is designed to load quickly in hydroseeding equipment. The fibers are sized for maximum loading in the tank and will produce a homogeneous slurry with the water, seed and fertilizer.

Wood-Lok 100 will go into slurry suspension during the mixing process and will remain in suspension during the application process.

Wood-Lok 100 is green in color allowing for visible application assistance at maximum pumping distances. This allows the operator to apply an even application of material.



FEATURES & ADVANTAGES:

- Made from selected, fresh cut, clean, whole wood chips
- Wood fibers stay in uniform suspension and blend with seed and fertilizer
- High loading and enters into the slurry quickly
- Forms a stable mulch mat that will hold the seed in place
- Provides a favorable microclimate for seed germination
- Helps establish grasses for erosion control, as well as fine turf
- Green dye assists in even application
- Wood-Lok 100 has no growth inhibiting factors
- Wood Fibers decompose after plants have established

APPLEGATE MULCH
1000 HIGHVIEW DRIVE
WEBBERVILLE MI 48892
HEADQUARTERS: 517-521-3545
FAX: 517-521-3597
800-627-7536 TOLL FREE
AskUs@ApplegateMulch.com

Worldwide Supplier

RECOMMENDED APPLICATION AND LOADING RATES:

RECOMMENDED MINIMUM APPLICATION RATE:

- 1,500 pounds per acre on flat to 5H:1V slopes

TANK LOADING RATE:

- 50 lbs per 100 gallon of water for tower gun application
- 45 lbs per 100 gallon of water for hose application

SPECIFICATIONS:

- Moisture content: 12.0%±3.0%
- Organic matter (oven dried basis): 99.3%±0.2%
- Ash content (oven dried basis): 0.7%±0.2%
- Average pH @ 3% concentration: 4.8±0.5
- Water holding capacity (per 100 grams oven dry fiber): min 1,250 gms.
- Color: Green
- Material Safety Data Class: Naturally occurring material

Manufacturer of the finest hydroseeding products.
Applegate's most appreciated benefit:

We listen, teach, serve, and stand behind you 100%.

Let us prove it. Call us with any concern.

1.800.627.7536

We've always been green.
Sustainable & earth-friendly since 1980



PLANTS IN: MICHIGAN ~ WISCONSIN ~ KENTUCKY ~ COLORADO ~ GEORGIA ~ PENNSYLVANIA ~ LOUISIANA - ARIZONA - ONTARIO

Then God said, "Let the land burst forth with every sort of grass"...and so it was...and God saw that it was good. - Genesis 1:11-12



Wood-Lok™ Blend 100

Virgin Wood & Paper Blend



PRODUCT OVERVIEW:

Wood-Lok Blend 100 is produced from the highest quality virgin poplar and pine wood chips then blended with clean, 100% recycled paper products for use in hydroseeding and erosion control applications.

The percent of virgin wood fiber and clean recycled paper in each bag is determined by our customers as each order is made to the individual customer's requirements.

When Wood-Lok Blend 100 is applied the fibers interlock forming a protective mulch mat to aid in erosion control, holding seeds in place and providing an ideal environment for seed germination.

Wood-Lok Blend 100 begins as clean whole pine and poplar wood chips from the forests of the Eastern United States. The wood fibers are separated in a special defibration process, using steam, pressure, and rubbing action. This process turns the wood chips into fibers. Safe biodegradable green dye is added and the fibers go through a special treatment to increase water holding capacity. The wood fibers then go through a high-temperature drying and baking process.

Clean milled paper content is added and the finished mulch is bagged, weighed and subjected to a rigorous sampling and quality control testing before shipment.

Wood-Lok Blend 100 is a superior product from the leader in recycled forest products.



FEATURES & ADVANTAGES:

- Wood-Lok Blend 100 forms a stable mulch mat holding seeds in place
- Recommended for use on flat to 5H:1V slopes
- Biodegradable and safe to use around humans, pets and wildlife
- Vibrant green color allows for efficient and even application
- Easy to pump / performs great on the ground
- Loads quickly and easily into any mechanical paddle agitated hydroseeding machine
- Made from selected, fresh cut pine and poplar whole wood chips (virgin wood) and 100% recycled paper
- Our patented manufacturing process includes extreme heat, steam, pressure and mechanical defibration producing the finest sterile, toxin free mulch for seeding and erosion control
- No growth inhibiting factors
- Biodegradable
- Packaged in 50 lb. heavy plastic bags with UV inhibitor
- Green dye is safe and aides in an even application of the products
- Mixes quickly and easily in any mechanical paddle agitated hydroseeding machine
- Safe for use around humans, pets, wildlife and fish

APPLEGATE MULCH
1000 HIGHVIEW DRIVE
WEBBERVILLE MI 48892
HEADQUARTERS: 517-521-3545
FAX: 517-521-3597
800-627-7536 TOLL FREE
AskUs@ApplegateMulch.com

Worldwide Supplier

RECOMMENDED APPLICATION AND LOADING RATES:

APPLICATION RATES

- 1,500 lbs./acre — flat to 5H: 1V slopes
- 1,800 lbs./acre — 4H: 1V slopes
- For steeper slopes, consult an Applegate Mulch dealer for advice on consumables that can be added or other mulches that are more suitable to these conditions.

TANK LOADING

- 50 lbs per 100 gallons of water / tower gun application
- 45 lbs per 100 gallons of water / hose application

SPECIFICATIONS:

- Moisture Content: 12.0% plus/minus 3.0%
- Organic Matter: 96.0% plus/minus 0.5% (oven dried basis)
- Ash content: 4.0% plus/minus 0.5% (oven dried basis)
- Wood fiber content: oven dried basis
- Clean paper fiber content: oven dried basis
- pH @ 3% concentration: 5.0 plus/minus 0.5
- Water holding capacity: min 1,250 gms. (per 100 grams oven dried fiber)
- Color: Green
- Material Safety Data Class: Naturally Occurring Material
- See detailed MSDS materials for additional information
- Wood-Lok Blend 100 is compressed and protected in UV-resistant 50 pound (22.7kg) easy to open, easy-loading bags, measuring 9 x 19 x 27 inches (23 x 48 x 69 cm). 40 bags are included in each stretch-wrapped pallet.

Manufacturer of the finest hydroseeding products.
Applegate's most appreciated benefit:

We listen, teach, serve, and stand behind you 100%.

Let us prove it. Call us with any concern.

1.800.627.7536

We've always been green.
Sustainable & earth-friendly since 1980



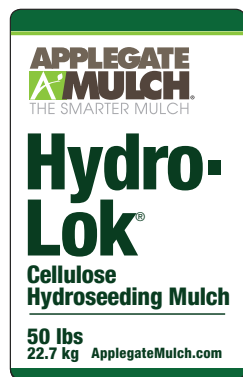
PLANTS IN: MICHIGAN ~ WISCONSIN ~ KENTUCKY ~ COLORADO ~ GEORGIA ~ PENNSYLVANIA ~ LOUISIANA - ARIZONA - ONTARIO

Then God said, "Let the land burst forth with every sort of grass"...and so it was...and God saw that it was good. - Genesis 1:11-12



Hydro-Lok®

100% Recycled Hydroseeding Mulch



PRODUCT OVERVIEW:

Hydro-Lok® provides the hydro-seeding professional with the most desired features looked for in a hydromulch – Color, Coverage and Cost. With Hydro-Lok® you get all 3. How? By using a secondary wood-based fiber product that is 100% recycled, environmentally safe, and ecologically preferred. It's made from all natural materials that are organic and fully biodegradable. Instead of cutting down trees, we've diverted this perfectly good existing resource that has served its initial purpose, from being dumped into overflowing landfills, lost forever. We've processed it and put it back into the ecosystem one more time, to establish grass, wildflowers and other plantings.

Our exclusive "Fiberization Process" results in a 'fuzzier' mulch with greater surface area and more exposed fibers to interlock. Packaged at an honest 10% moisture content you'll always get more fiber to the ton with Hydro-Lok®.

Hydro-Lok® comes in standard 50 pound bales and will work well in all brands of hydraulic seeding equipment.

Hydro-Lok® promotes quick germination and controls erosion by forming a nurturing blanket over the applied area, holding the seed in place while providing a protective cover for both seed and soil. Hydro-Lok® dependably holds until seed establishment has taken place. Use with our Pro-Tack professional grade tackifier for extra holding power on slopes.

Hydro-Lok® holds 90% of its own weight in absorbed water, providing two additional benefits. First, by absorbing and holding moisture, it provides the seed with a more continuous water supply until germination has taken place. Second, by absorbing excessive moisture during rainfall and irrigation events. It protects the seed not only from washing away, but also from drowning in too much water, ultimately enhancing germination on all types of projects.

Hydro-Lok® is ideal for quality turfgrass plantings such as home lawns and golf courses and economical enough for revegetation and wildflower seeding.



FEATURES & ADVANTAGES:

- Forms a nurturing blanket over the applied area
- Provides a good environment for seed germination
- Holds seed in place until seed establishment takes place
- Vibrant green color
- 100% recycled material
- Safe for the environment, humans, pets, wildlife and fish
- 100% organic and biodegradable
- Holds 90% of its own weight in water
- Packaged in 50 lb bales

APPLEGATE MULCH
1000 HIGHVIEW DRIVE
WEBBERVILLE MI 48892
HEADQUARTERS: 517-521-3545
FAX: 517-521-3597
800-627-7536 TOLL FREE
AskUs@ApplegateMulch.com

Worldwide Supplier

RECOMMENDED APPLICATION AND LOADING RATES:

APPLICATION RATE

- 1,800 lbs per acre on Flat to 5H:1V slopes

TANK LOADING

- 50 lbs per 100 gallon of water

SPECIFICATIONS:

- Bale weight: 50 lbs.
- Particle Length approx.: 10mm
- Particle Thickness approx.: 1mm
- pH Range: 4.0 to 8.5
- Ash Content: 1.6% max
- Water Holding Capacity: 90% min
- Moisture Content: 10±3%

Manufacturer of the finest hydroseeding products.
Applegate's most appreciated benefit:

We listen, teach, serve, and stand behind you 100%.

Let us prove it. Call us with any concern.

1.800.627.7536

We've always been green.
Sustainable & earth-friendly since 1980





Premium Paper 100

100% Recycled Cellulose

PRODUCT OVERVIEW:



Premium Paper 100 is manufactured without adding water in the process. In fact, our manufacturing process reduces moisture content to a staggering 7% by weight, which means there is 200 lbs more mulch fiber in every ton, or 10% more mulch for the money compared to most other national brands. Premium Paper 100 provides you the lowest cost!

High moisture mulches have a high risk of mold growth, which can dramatically lower germination rates and cause many other problems. Premium Paper 100 has an incredibly low moisture content, which naturally inhibits mold growth that can cause hard chunks that clog pumps, hoses and nozzles, plus our superb quality control process virtually eliminates all other debris clogging materials.

Our premium cellulose fibers increase your productivity and profits because our mulch mixes quickly reducing tank loading time.

On the ground Premium Paper 100 produces a true mulch blanket that helps to prevent soil erosion and provides an optimal environment for seed germination.

Premium Paper 100 is packaged in our exclusive 33 lb. bale. It can be used in any brand of hydroseeding equipment because the mulch breaks up easily and wets quickly, speeding up your loading time and increasing your productivity. The full size fibers provide better coverage and better results than any pourable or pelletized mulch product on the market today.

The 33 lb easy to handle bales, reduce the risk of injury and workman's compensation claims. Less compression in the bales allow the fibers to fully expand in your slurry, providing better coverage. There is a green dye pack included in every bale.



FEATURES & ADVANTAGES:

- For use on flat surfaces to 6H:1V slopes
- Mulch fibers provide a stable environment for seeds to germinate
- Can be used in jet agitated and mechanical agitated hydroseeding machines
- Vivid green color assists with an efficient and even application
- Mixes quickly and easily
- 100% hand sorted recycled newsprint
- More mulch per pound due to low moisture content
- Packaged in 33 lb bags – easier to handle bales
- Premium Paper is equivalent to 42 lbs of all competitive brands
- Low moisture means cleaner mulch – less chance of mold and mildew forming in the bag.
- Seven manufacturing plants in the United States – allows Applegate to boast the lowest average freight cost in the industry

APPLEGATE MULCH
1000 HIGHVIEW DRIVE
WEBBERVILLE MI 48892
HEADQUARTERS: 517-521-3545
FAX: 517-521-3597
800-627-7536 TOLL FREE
AskUs@ApplegateMulch.com

Worldwide Supplier

RECOMMENDED APPLICATION AND LOADING RATES:

APPLICATION RATE

- Minimum recommended rate: 1,800 lbs per acre on Flat to 6H:1V slopes

TANK LOADING

- 33 lbs to 100 gallon of water.

SPECIFICATIONS:

- Bale weight: 33 lbs.
- Water holding capacity approx.: 9 to 1
- Moisture content: 7%±2%
- Ash Content: 1.6% max.
- PH Range: 6.0± 1.0
- Dye: Green and safe for the environment, humans, animals and fish

Manufacturer of the finest hydroseeding products.
Applegate's most appreciated benefit:

We listen, teach, serve, and stand behind you 100%.

Let us prove it. Call us with any concern.

1.800.627.7536

We've always been green.
Sustainable & earth-friendly since 1980



PLANTS IN: MICHIGAN ~ WISCONSIN ~ KENTUCKY ~ COLORADO ~ GEORGIA ~ PENNSYLVANIA ~ LOUISIANA - ARIZONA - ONTARIO

Then God said, "Let the land burst forth with every sort of grass"...and so it was...and God saw that it was good. - Genesis 1:11-12



Premium Paper 200

100% Recycled Cellulose + Tackifier



PRODUCT OVERVIEW:

Premium Paper 200 is manufactured without adding water in the process. In fact, our manufacturing process reduces moisture content to a staggering low 7% by weight. That means that 200 lbs more fiber for every ton, or 10% more mulch for the money compared to most other national brands. You avoid paying for 200 pounds of extra water. Premium Paper 200 provides you the lowest cost.

No Water Added – 98.4% Active Ingredients. Applegate tackifier is added to provide the additional holding power on job sites where the soil is loose and moderate erosion is a concern.

High moisture mulches are also a high risk for mold growth, which can dramatically lower germination rates and cause many other problems. Premium Paper 200 has an incredibly low moisture content that naturally inhibits mold growth, which can cause hard chunks that clog pumps, hoses and nozzles. Our superb quality control process virtually eliminates debris clogging materials.

Our premium cellulose fibers increase your productivity and profits because our mulch mixes quickly reducing tank loading time. On the ground Premium Mulch produces a true mulch blanket that helps to prevent soil erosion and provides an optimal environment for seed germination.

Premium Paper 200, packaged in our exclusive 33 lb. bag, can be used in any brand of hydroseeding equipment because the mulch breaks up easily and wets quickly, speeding up your loading time and increasing your productivity. The full size hydromulch fibers provide better coverage and better results than any pourable or palletized mulch product.

Applegate's convenient 33 lb "Easy Pour" bales are easier to handle, reducing the risk of injury and workman's compensation claims. Less compression in the bales allow the fibers to fully expand in your slurry, providing better coverage. There is a green dye pack included in every bale.



FEATURES & ADVANTAGES:

- Premium Paper 200 with Applegate Tackifier
- For use on flat surfaces to 5H:1V slopes
- Mulch fibers provide a stable environment for seeds to germinate
- Can be used in jet agitated and mechanical agitated hydroseeding machines
- Vivid green color assists with an efficient and even application
- Mixes quickly and easily
- 100% hand sorted recycled newsprint
- More mulch per pound due to low moisture content - Premium Paper is equivalent to 40 lbs of all competitive brands of mulch
- Packaged in 33 lb bags - lighter bales are easier to handle
- 33 lbs of Premium Paper 200 is equivalent to 40 lbs of competitive brands of paper mulch
- Low moisture means cleaner mulch – less chance of mold and mildew forming in the bag.
- Seven manufacturing plants in the United States – allow Applegate to boast the lowest average freight cost in the industry

APPLEGATE MULCH
1000 HIGHVIEW DRIVE
WEBBERVILLE MI 48892
HEADQUARTERS: 517-521-3545
FAX: 517-521-3597
800-627-7536 TOLL FREE
AskUs@ApplegateMulch.com

Worldwide Supplier

RECOMMENDED APPLICATION AND LOADING RATES:

APPLICATION RATE

- Minimum recommended rate: 1,800 lbs per acre on Flat to 5H:1V slopes

TANK LOADING

- 33 lbs to 100 gallon of water.

SPECIFICATIONS:

- Bale weight: 33 lbs
- Water holding capacity approx.: 9 to 1
- Moisture content: 7% +/- 2%
- Ash Content: 1.6% max
- PH Range: 6.0 +/- 1.0
- Dye: Green and safe for the environment, humans, animals and fish

Manufacturer of the finest hydroseeding products.
Applegate's most appreciated benefit:

We listen, teach, serve, and stand behind you 100%.

Let us prove it. Call us with any concern.

1.800.627.7536

We've always been green.
Sustainable & earth-friendly since 1980



PLANTS IN: MICHIGAN ~ WISCONSIN ~ KENTUCKY ~ COLORADO ~ GEORGIA ~ PENNSYLVANIA ~ LOUISIANA ~ ARIZONA ~ ONTARIO

Then God said, "Let the land burst forth with every sort of grass"...and so it was...and God saw that it was good. - Genesis 1:11-12



G-Tac™

Organic Guar Tackifier



PRODUCT OVERVIEW:

G-Tac is a premium cross-linked guar gum tackifier. It is a fast, effective and inexpensive all natural soil stabilizer.

It protects fiber mulch from wind and rain erosion by creating superb fiber to fiber and fiber to soil bonds.

G-Tac is obtained from the seeds of Cyamopsis tetragonolobus, an annual leguminous plant native of in the semi-arid region of the Indian Sub-Continent.

APPLEGATE MULCH
1000 HIGHVIEW DRIVE
WEBBERVILLE MI 48892
HEADQUARTERS: 517-521-3545
FAX: 517-521-3597
800-627-7536 TOLL FREE
AskUs@ApplegateMulch.com

Worldwide Supplier

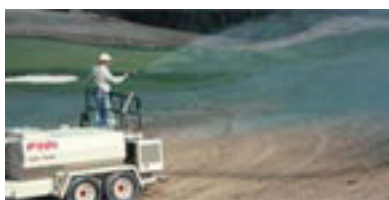
RECOMMENDED APPLICATION AND LOADING RATES:

APPLICATION RATES

- Hydromulching: 40 lbs per acre
- Straw Tacking: 30 lbs per acre
- Soil Stabilization: 50 to 90 lbs per acre

TANK LOADING

- G-Tac should be added to the tank and mixed before adding hydromulch



PACKAGING:

- 40 case of 8 x 5lbs. bags
- 50 lbs. bag / 40 per ton

FEATURES & ADVANTAGES:

- G-Tac is organic, non-toxic & environmentally friendly
- Medium coarse ground powder aids in easy mixing
- Aids in effectively tacking wood fiber, paper and straw mulch with soil
- 100% biodegradable
- Safe for the environment, humans, pets, wildlife and fish
- Packaging: 8 x 5lbs. bags and 50lbs. bags.

Manufacturer of the finest hydroseeding products.
Applegate's most appreciated benefit:

We listen, teach, serve, and stand behind you 100%.

Let us prove it. Call us with any concern.

1.800.627.7536

We've always been green.
Sustainable & earth-friendly since 1980

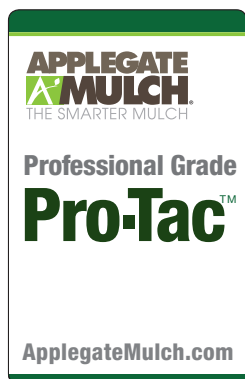


PLANTS IN: MICHIGAN ~ WISCONSIN ~ KENTUCKY ~ COLORADO ~ GEORGIA ~ PENNSYLVANIA ~ LOUISIANA - ARIZONA -ONTARIO -
Then God said, "Let the land burst forth with every sort of grass"...and so it was...and God saw that it was good. - Genesis 1:11-12



Pro-Tac™

Professional Grade Tackifier



PRODUCT OVERVIEW:

PRO TAC is a professional grade hydro-seeding tackifier designed to increase soil stabilization, reduce wind and water erosion, maximize fiber-to-fiber and fiber-to-soil adhesion, enhance germination and control dust in nontraffic areas.

Pro-Tac dissolves quickly and mixes completely into the hydroseeding slurry.

Pro-Tac also lubricates the slurry for ease of pumping.



FEATURES & ADVANTAGES:

- Soil stabilizer
- Reduces water erosion
- Reduces wind erosion
- Maximizes fiber to fiber and fiber to soil adhesion
- Holds seed in place
- Controls dust in non-traffic areas

APPLEGATE MULCH
1000 HIGHVIEW DRIVE
WEBBERVILLE MI 48892
HEADQUARTERS: 517-521-3545
FAX: 517-521-3597
800-627-7536 TOLL FREE
AskUs@ApplegateMulch.com

Worldwide Supplier

RECOMMENDED APPLICATION RATES:

- HYDROSEEDING /HYDROMULCHING
- 3-6 lb / 1500 gallons of water/ ½ acre
- DRY APPLICATIONS
- 10-20lbs / acre on flat to 4:1 slopes
- 20-50lbs / acre on 3:1 to 1:1 slopes

PHYSICAL PROPERTIES

- Appearance:
White to off-white granular powder
- Chemical Composition:
Sodium acrylate / acrylamide copolymer
- Ionic Character: Anionic
- Ionic Charge: 30%
- Active Content: 88% minimum
- Molecular Weight: Approx. 12-16 million
- Insoluble Content: 2% maximum
- Residual Monomer: 0.05% maximum
- Ph Range: 7-9
- Moisture: 10% maximum
- Shelf Life: Up to 5 years
(store in dry & cool location)
- Pro-Tac meets ANSI/NSF
Standard 60 for drinking water treatment

PACKAGING:

- 5 lbs bags
- 55 lbs paper bags
- 2 x 15lbs. jugs per case

Manufacturer of the finest hydroseeding products.
Applegate's most appreciated benefit:

**We listen, teach, serve, and
stand behind you 100%.**

Let us prove it. Call us with any concern.

1.800.627.7536

We've always been green.
Sustainable & earth-friendly since 1980



PLANTS IN: MICHIGAN ~ WISCONSIN ~ KENTUCKY ~ COLORADO ~ GEORGIA ~ PENNSYLVANIA ~ LOUISIANA - ARIZONA - ONTARIO

Then God said, "Let the land burst forth with every sort of grass"...and so it was...and God saw that it was good. - Genesis 1:11-12



Mechanical Fibers

Bond Strengthening/Binding Fibers



PRODUCT OVERVIEW:

Applegate Fiber, is specially coated to improve the bonding strength of Applegate hydro-seeding mulches.

Applegate Fiber, improves the performance of hydro-seeding mulches by providing a mechanical adhesion of fibers resulting from the fibers long length. This reduces the need for chemical tackifiers, and extends the longevity of fiber mulch hydration.



FEATURES & ADVANTAGES:

- Improves the bonding strength of hydromulches
- Mechanically binds fibers to fibers and fibers to soil particles
- Reduces the need for chemical tackifiers

APPEARANCE:

- White Coarse Powder & Fiber Mix.

PACKAGING:

- Available in 50 lb cases of 10 x 5lbs. bags



APPLEGATE MULCH
1000 HIGHVIEW DRIVE
WEBBERVILLE MI 48892
HEADQUARTERS: 517-521-3545
FAX: 517-521-3597
800-627-7536 TOLL FREE
AskUs@ApplegateMulch.com

Worldwide Supplier

RECOMMENDED APPLICATION RATES:

- 20 lbs per acre when used without a chemical tackifier
- 10 lbs per acre when used with a chemical tackifier

SPECIFICATIONS:

- Applegate Fibers are manufactured from 100% virgin Polyester and has the following physical characteristics:
- Cut Length: 6mm, 12mm, 19mm, 25mm
- Denier: 6 (5-7)
- Color: White
- Fibers per lb. (at ¾"): 30 million
- Bulk Density: 25-28 lbs./cubic foot (approximate)
- Melting Point, C: 46
- Tensile Strength: 75-79 psi
- Elongation: 12% avg.
- Specific Gravity: 1.38
- Heat Conductivity: Low
- Electrical Conductivity: Low
- Water Absorption: 0.2%

Manufacturer of the finest hydroseeding products.
Applegate's most appreciated benefit:

We listen, teach, serve, and stand behind you 100%.

Let us prove it. Call us with any concern.

1.800.627.7536

We've always been green.
Sustainable & earth-friendly since 1980



PLANTS IN: MICHIGAN ~ WISCONSIN ~ KENTUCKY ~ COLORADO ~ GEORGIA ~ PENNSYLVANIA ~ LOUISIANA - ARIZONA - ONTARIO

Then God said, "Let the land burst forth with every sort of grass"...and so it was...and God saw that it was good. - Genesis 1:11-12



Gel400™

Water Absorbent Polymer



PRODUCT OVERVIEW:

Gel 400 is a superabsorbent polymer, popularly known as a cross-linked PAM. It can retain up to 500 times its own weight in water, allowing for continual hydration.

Gel 400 is effective because it will absorb water during periods of high moisture such as after irrigation and rain and then release the absorbed water back to the soil for plant use when conditions merit.

APPLEGATE MULCH
1000 HIGHVIEW DRIVE
WEBBERVILLE MI 48892
HEADQUARTERS: 517-521-3545
FAX: 517-521-3597
800-627-7536 TOLL FREE
AskUs@ApplegateMulch.com

Worldwide Supplier

RECOMMENDED APPLICATION RATES:

■ 5 lbs to 10 lbs per acre
(1,000 gallons of water) for hydroseeding

OTHER USES:

- Trees and shrub planting
- Flowers
- Container plants
- Bare root dipping



PACKAGING:

■ 40 lb cases - 8 x 5lbs. bags -
36 cases per pallet

■ 55 lbs. bags -
40 bags per pallet

FEATURES & ADVANTAGES:

- Absorbs up to 500 times its weight
- Absorbs water rapidly
- Decreases frequency of irrigation
- Releases stored water back to the soil as conditions merit
- Reduces stress on newly planted seeds, sod, transplants, etc.
- Can be applied in wet or dry form

Manufacturer of the finest hydroseeding products.
Applegate's most appreciated benefit:

**We listen, teach, serve, and
stand behind you 100%.**

Let us prove it. Call us with any concern.

1.800.627.7536

We've always been green.
Sustainable & earth-friendly since 1980



PLANTS IN: MICHIGAN ~ WISCONSIN ~ KENTUCKY ~ COLORADO ~ GEORGIA ~ PENNSYLVANIA ~ LOUISIANA - ARIZONA - ONTARIO
Then God said, "Let the land burst forth with every sort of grass"...and so it was...and God saw that it was good. - Genesis 1:11-12



DustFloc™ Dust Suppressant



PRODUCT OVERVIEW:

DustFloc is a portable soil stabilizing system used to prevent fugitive dust. It is a proprietary blend of environmentally friendly, natural polysaccharides. DustFloc can be used as a stand alone stabilizer or in conjunction with all hydro-mulches.

Once applied, the DustFloc liquid will congeal quickly and dry to form a crust on the soil surface, preventing wind erosion and resistant to limited rainfall conditions. It will provide good protection for fugitive soils and PM 10 sources. Use for landfills, road banks, construction sites, stockpiled topsoil, airport runway and taxiway shoulders, helipads and most slopes and berms where vegetation has not been established.



PRODUCT OVERVIEW:

The soil stabilizer shall be manufactured of environmentally friendly natural polysaccharides. DustFloc has the following chemical analysis:

- Protein: 5% max
- Ash: 1.0% max
- Fiber: 0.5% max
- pH: 5.5-6.5
- Viscosity (60lb with 1000 gallons of water in 15 minutes of stirring): 50 cps

APPLEGATE MULCH
1000 HIGHVIEW DRIVE
WEBBERVILLE MI 48892
HEADQUARTERS: 517-521-3545
FAX: 517-521-3597
800-627-7536 TOLL FREE
AskUs@ApplegateMulch.com

Worldwide Supplier

APPLICATION AND LOADING RATES:

APPLICATION RATES

- Flat to 5:1 slopes: 50 Lbs/acre
- 5:1 to 4:1 slopes: 80 Lbs/acre
- 4:1 or steeper: 100 Lbs/acre

WATER TRUCKS AND HYDROSEEDERS

- Fill tank approximately 1/3 with water.
- Pour DustFloc into the tank slowly.
DO NOT DUMP.
- Apply to sufficiently wet the soil surface.
Avoid excess water and puddling.

PACKAGING:

- 40 case of 8 x 5lbs. bags
- 50 lbs. bag / 40 per ton

Manufacturer of the finest hydroseeding products.
Applegate's most appreciated benefit:

**We listen, teach, serve, and
stand behind you 100%.**

Let us prove it. Call us with any concern.

1.800.627.7536

We've always been green.
Sustainable & earth-friendly since 1980



PLANTS IN: MICHIGAN ~ WISCONSIN ~ KENTUCKY ~ COLORADO ~ GEORGIA ~ PENNSYLVANIA ~ LOUISIANA - ARIZONA ONTARIO

"Then God said, 'Let the land burst forth with every sort of grass'...and so it was...and God saw that it was good." - Genesis 1:11-12